



BLACK PEARL
T O U R S

Island Aura

Seychelles

5 Days, 4 Nights

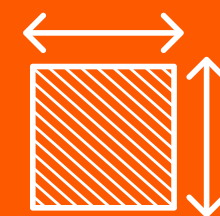


SEYCHELLES

EAST AFRICA



Seychelles, an archipelago of 115 islands in the Indian Ocean, is a tropical haven known for its pristine beaches, turquoise waters, and lush nature reserves. Visitors can explore iconic spots like Anse Lazio and Anse Source d'Argent, snorkel or dive in vibrant coral reefs, and hike through the stunning trails of Morne Seychellois National Park. The islands are home to unique wildlife, including giant Aldabra tortoises and rare bird species. With its luxurious resorts, rich Creole culture, and breathtaking sunsets, Seychelles offers an unforgettable escape for relaxation and adventure.



AREA KM²

459



POPULATION

100

THOUSAND

FLIGHT SCHEDULE



BEY/ADD/SEZ				
ET417	BEY	ADD	02:55	08:40
ET879	ADD	SEZ	09:35	14:25

SEZ/ADD/BEY				
ET878	SEZ	ADD	17:20	20:05
ET406	ADD	BEY	21:30	01:05

PACKAGE DETAILS

INCLUSIONS

- Round-Trip Airfare Ticket
- Accommodation In A Selected Hotel, Meal Plan As Specified
- Airport Transfers
- Travel Insurance
- E-SIM

EXCLUSIONS

- Personal Expenses



LAILA RESORT & SPA SEYCHELLES



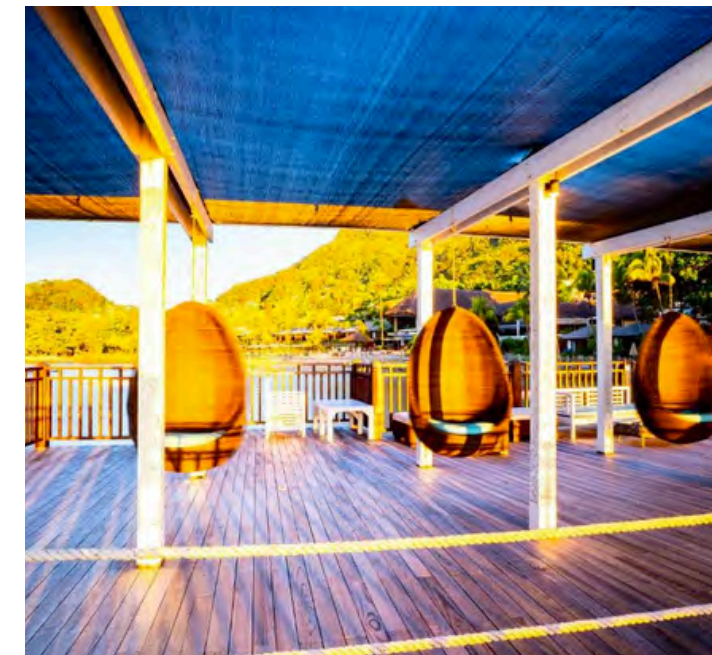
PACKAGE PRICES

Accommodation Options

Room Type	Meal Plan	06-01-25 09-02-25 14-05-25 31-07-25 01-09-25 30-09-25	10-02-25 29-04-25 01-08-25 31-08-25 01-10-25 31-10-25	01-01-25 05-01-25 30-04-25 13-05-25
DELUXE	BED & BREAKFAST	\$1,573	\$1,639	\$1,899
DELUXE MOUNTAIN & VILLAGE		\$1,602	\$1,668	\$1,941
DELUXE PARTIAL SEA VIEW		\$1,657	\$1,733	\$2,026
JUNIOR TERRACE SUITE		\$2,039	\$2,152	\$2,598

Prices are listed per person

FISHERMAN'S COVE RESORT



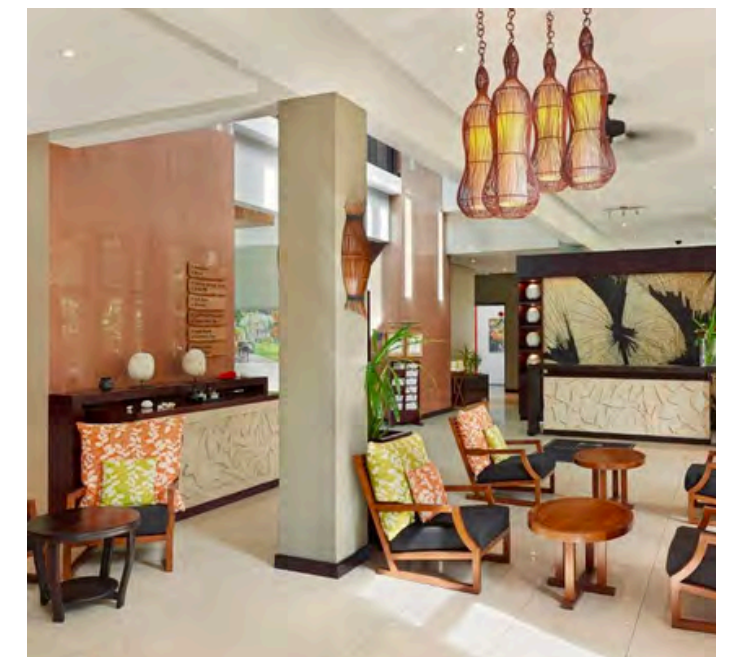
PACKAGE PRICES

Accommodation Options

Room Type	Meal Plan	11-01-25 08-02-25 02-03-25 28-03-25 11-05-25 28-06-25	26-04-25 10-05-25 29-06-25 12-07-25 24-08-25 11-10-25	09-02-25 01-03-25 29-03-25 25-04-25 13-07-25 23-08-25 12-10-25 31-10-25
SUPERIOR	HALF-BOARD	\$1,749	\$1,815	\$1,893
DELUXE OCEAN VIEW		\$1,815	\$1,882	\$1,960
JUNIOR SUITE OCEAN VIEW		\$1,871	\$1,937	\$2,015
FAMILY SUITE GARDEN VIEW		\$1,949	\$2,015	\$2,093
EXECUTIVE SUITE		\$2,004	\$2,071	\$2,148

Prices are listed per person

DOUBLETREE BY HILTON ALLAMANDA RESORT & SPA



PACKAGE PRICES



Accommodation Options				
Room Type	Meal Plan	09-01-25 11-02-25 26-08-25 30-09-25	12-02-25 11-04-25 07-05-25 15-07-25	12-04-25 06-05-25 16-07-25 25-08-25 01-10-25 31-10-25
KING DELUXE OCEAN VIEW	HALF-BOARD	\$1,639	\$1,661	\$1,728
KING GRAND DELUXE OCEAN VIEW		\$1,683	\$1,728	\$1,772
KING PREMIUM OCEAN VIEW WITH JACUZZI		\$1,772	\$1,794	\$1,861

Prices are listed per person



BLACK PEARL

T O U R S

BOOK NOW



Shahnaz A. Omar S.
+96181755553 +96176706620
Fadel H. Salma T.
+96170999653 +96181006079
Malake N. Samar N.
+9613077493 +96176001409
Naziha C.
+96181057313

Click the name to chat on WhatsApp



www.blackpearlholiday.com



info@blackpearl-tours.com



Noujoum Center, Ras Maska
Street, Haykaliye, Koura

Click the address to view on Google Maps