



*Untamed Beauty*  
*Uganda*

8 Days, 7 Nights



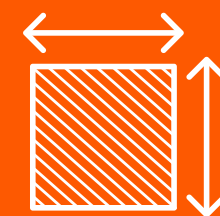


# UGANDA

## AFRICA



Uganda, a landlocked country in East Africa, is known for its diverse landscapes and rich cultural heritage. Often referred to as the "Pearl of Africa," Uganda boasts stunning natural beauty, including the majestic Lake Victoria, the source of the Nile River, and the lush Bwindi Impenetrable Forest, home to endangered mountain gorillas. Visitors can explore the vibrant city of Kampala, enjoy the serene beauty of Queen Elizabeth National Park, or take a trek through the Rwenzori Mountains. With its blend of wildlife, landscapes, and vibrant culture, Uganda offers an unforgettable experience for nature enthusiasts and adventure seekers alike.



AREA KM<sup>2</sup>

**241**

THOUSAND



POPULATION

**48.6**

MILLION

# FLIGHT SCHEDULE



BEY/DOH/EBB				
QR419	BEY	DOH	01:40	05:40
QR1383	DOH	EBB	09:50	15:30

EBB/DOH/BEY				
QR1384	EBB	DOH	17:30	23:20
QR416	DOH	BEY	07:35	11:35

INDIAN OCEAN

# PACKAGE DETAILS

## INCLUSIONS

- Round-Trip Airfare Ticket
- Accommodation In Entebbe With Bed & Breakfast
- Accommodation Upcountry With Full-Board
- Airport Transfers
- Travel Insurance
- E-SIM
- Ground Transportation Via 4x4 Tourist Vehicle With English-Speaking Guide
- Gorilla Permits
- Chimpanzee Trekking In Kibale National Park
- Boat Ride On Kazinga Channel & Lake Mburo
- Game Drives In Queen Elizabeth National Park & Lake Mburo National Park
- Nature Walk In Bigodi Wetland Sanctuary
- Complimentary Bottled Water On Board

## EXCLUSIONS

- Visa Fees



# PACKAGE PRICES

## ECONOMY TIER

### Accommodation Options

Day	Name	Star Rating	Meal Plan	1 PAX	2 PAX	3 PAX
1	PAPYRUS GUEST HOUSE	3	BED & BREAKFAST	\$5,634	\$4,220	\$3,892
2	ISUNGA LODGE	3	FULL-BOARD			
	KIBALE FOREST CAMP	3				
3	TWIN LAKES SAFARI LODGE	4	FULL-BOARD			
4						
5	RIDE FOR A WOMAN	3	FULL-BOARD			
6						
7	KIGARAMA WILDERNESS	3	FULL-BOARD			

**Prices are listed per person**

# PACKAGE PRICES

## MID-RANGE TIER

### Accommodation Options

Day	Name	Star Rating	Meal Plan	1 PAX	2 PAX	3 PAX
1	BOMA GUEST HOUSE	3	BED & BREAKFAST	\$6,080	\$4,535	\$4,216
	2 FRIENDS GUEST HOUSE	3				
2	TURACO TREE TOPS	4	FULL-BOARD			
	CRATER SAFARI LODGE	4				
3	BUFFALO SAFARI LODGE	4	FULL-BOARD			
4						
5	BUHOMA HAVEN LODGE	3	FULL-BOARD			
6						
7	KIGARAMA WILDERNESS	3	FULL-BOARD			

**Prices are listed per person**

# PACKAGE PRICES

## LUXURY TIER

### Accommodation Options

Day	Name	Star Rating	Meal Plan	1 PAX	2 PAX	3 PAX
1	HOTEL NUMBER 5	5	BED & BREAKFAST	\$7,599	\$5,728	\$5,404
	LAKE VICTORIA SERENA RESORT	5				
2	PRIMATES LODGE	3	FULL-BOARD			
3	ELEPHANT PLAINS LODGE	4	FULL-BOARD			
4						
5	MAHOGANY SPRINGS LODGE	4	FULL-BOARD			
6						
7	MIHINGO LODGE	4	FULL-BOARD			
	KIGAMBIRA SAFARI LODGE	4	HALF-BOARD			

**Prices are listed per person**

# SAFARI OVERVIEW

This 8-Day Primates and Wildlife Uganda Safari is designed for someone with limited time in Uganda but primarily interested in gorilla and chimp treks, along with a bit of wildlife. The trip starts in Entebbe, with a drive to Kibale Forest National Park that takes approximately 6 hours, including a lunch stopover in Fort Portal.

Kibale Forest National Park is famous for chimpanzee tracking, hosting 13 primate species. Other primates in the park include colobus and L'Hoest's monkeys, as well as grey-cheeked mangabeys. Chimp tracking is an easier trek lasting an average of 3 hours. The minimum age for participants is 12 years, and visitors are grouped into teams of 6. Tracking starts at 8:00 AM for the morning session and 2:00 PM for the afternoon session. On this trip, you'll take part in a morning chimp trek, after which you'll return to your lodge for lunch before transferring to Queen Elizabeth National Park. At Queen Elizabeth National Park, in addition to the famous Kazinga Channel cruise, you'll enjoy a game drive in the northern part (Kasenyi Plains) as well as in the south (Ishasha, famous for the tree-climbing lions).

Gorilla tracking in Bwindi National Park can be done at four designated locations: Nkuringo, Rushaga, Ruhija, and Buhoma, with a total of 18 habituated gorilla families that can be tracked each day. On your tracking day, visitors are allocated different families in groups of 8 people, and are allowed to view the gorillas for a maximum of one hour. Trekking time depends on the group you're allocated to and can range from 3 to 8 hours. After this unforgettable adventure, you'll head to Lake Mburo National Park, the smallest savannah park in Uganda and the only one where you can have a safari walk. During the walk or game drive, you can spot animals including large herds of zebras, buffalo, impala, giraffes, warthogs, and waterbucks. Other wildlife, such as crocodiles and hippos, can be seen during the 2-hour boat cruise, along with various bird species including colorful kingfishers and magnificent fish eagles.

## **Safari Highlights:**

- Private Game drives in Queen Elizabeth, the Ishasha Sector and Lake Mburo
- Boat cruise on Kazinga Channel and Lake Mburo
- Gorilla Trekking
- Chimpanzee trekking
- Bigodi Swamp walk
- Community activities in Bwindi



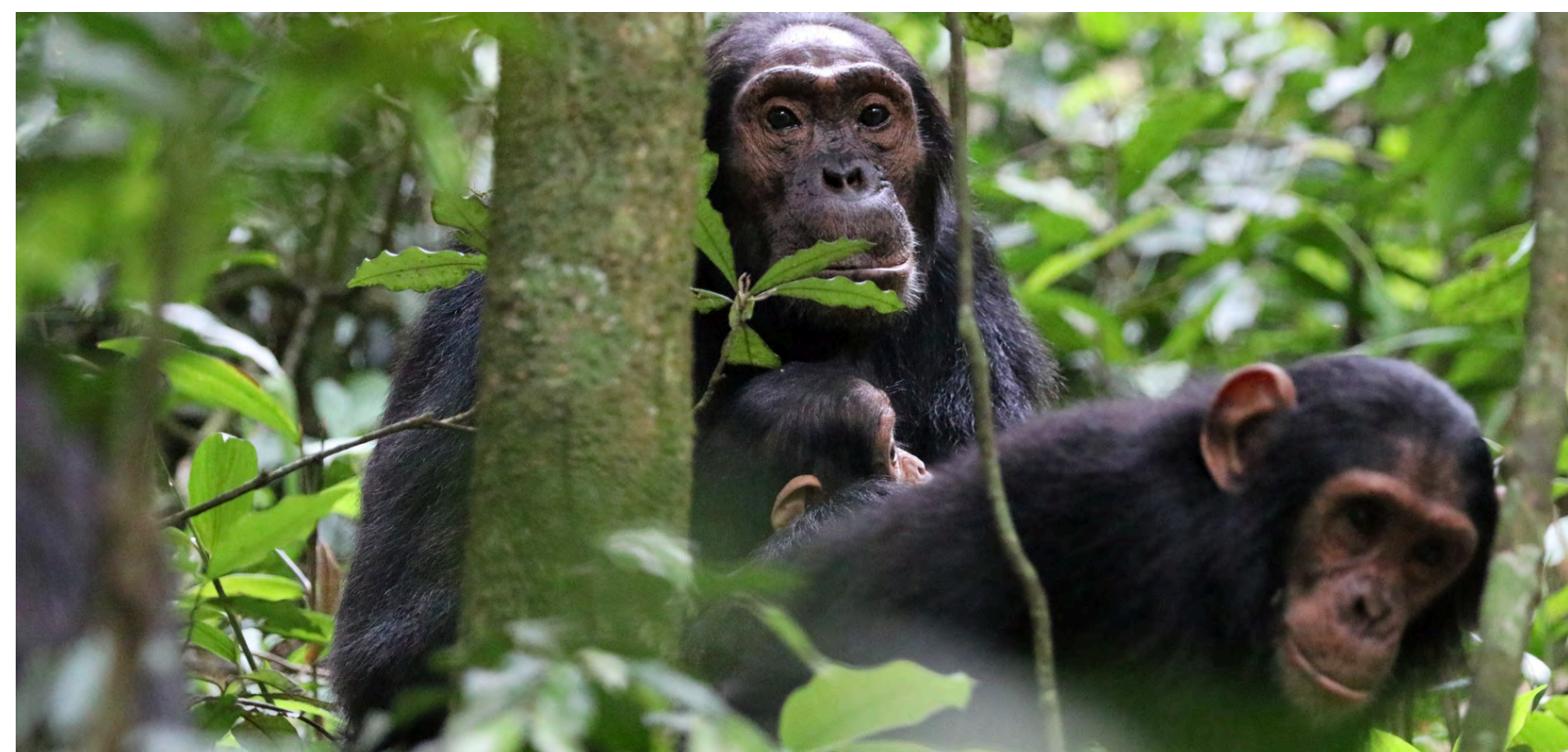
# ITINERARY

## Day 01. Arrival

On your arrival at Entebbe Airport, you will be met and welcomed by our representative. He will be your tour and driver guide for the rest of the days you will be in the country. After the interaction and brief introduction, you will be transferred to your preferred Hotel in Entebbe for Overnight stay.

## Day 02. Kibale Forest National Park

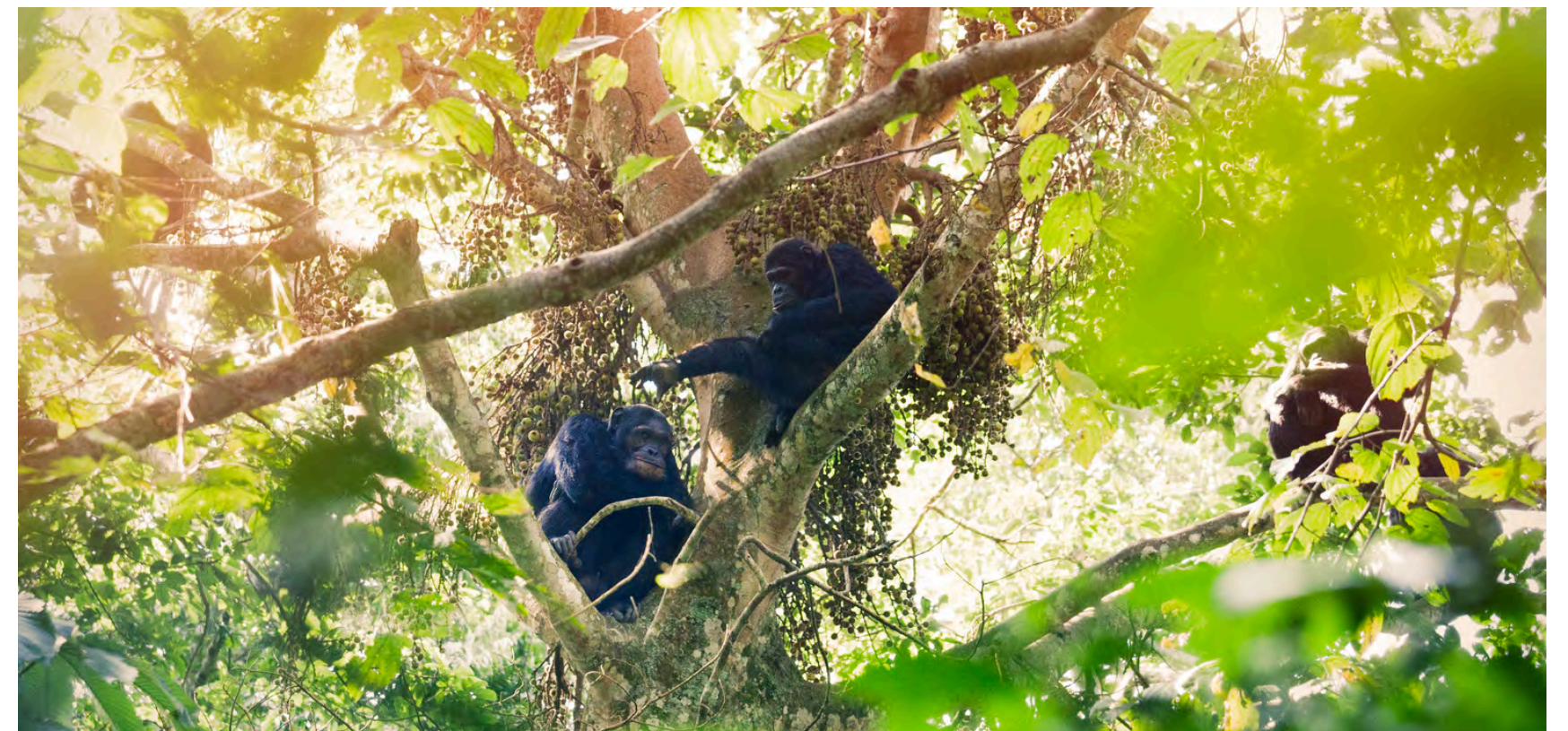
Early morning have your breakfast at the lodge and depart for Kibale National Park. The Journey will take you through the Western Rift Valley's Albertine Escarpment as well as the green country side and traditional homesteads of the local people with in the Bunyoro and Toro Kingdoms. Upon arriving in Fort portal, clear days will give you a glimpse of the legendary snowcapped Mountain also famously known as the "Mountains of the Moon" (Mt Rwenzori). Kibale Forest National Park is a home to 13 primate species including the common Mans' closest Cousins (Chimpanzees). The Forest is also a home to over 325 bird species including the rare Green Breasted Pitta. Arrive at your Lodge in the afternoon. Check in and later set out for a nature and bird walk with in the Bigodi Swamp. The wetland is a



project being run by local communities and is much known for its rich diversity of bird species and other primates. It also provides employment and job opportunities to the local youth through tour guiding. Return to your lodge in the evening for dinner and overnight stay. (Approx. 6-7 hrs drive)

## **Day 03. Chimpanzee Tracking & Transfer To Queen Elizabeth National Park**

Morning breakfast at your lodge and set out for a half day Chimpanzee tracking experience. You will be transferred to the park headquarters at Kanyanchu for a 30-40mins briefing and get to know more about the chimpanzees and their ways of living within the forest. After this, you will then embark on your journey to search for these primates through the forest. On spotting the chimps, you are only given one hour to be with them as you take videos and pictures. Along the way other primate species can be spotted such as the L'Hoest's Monkeys, Red tailed Monkeys, Blue Vervet Monkeys, and Black & White colobus Monkeys among others. Other animals that can be seen are Forest Elephants, Buffalos and a lot of bird species. After the tracking, return to your Lodge for Lunch and afternoon transfer to your next destination Queen Elizabeth National - one of country's best wildlife National parks with over 600 bird species, mammals like Lions, Leopards, elephants, buffaloes and so many others. Dinner and Overnight at your Lodge.

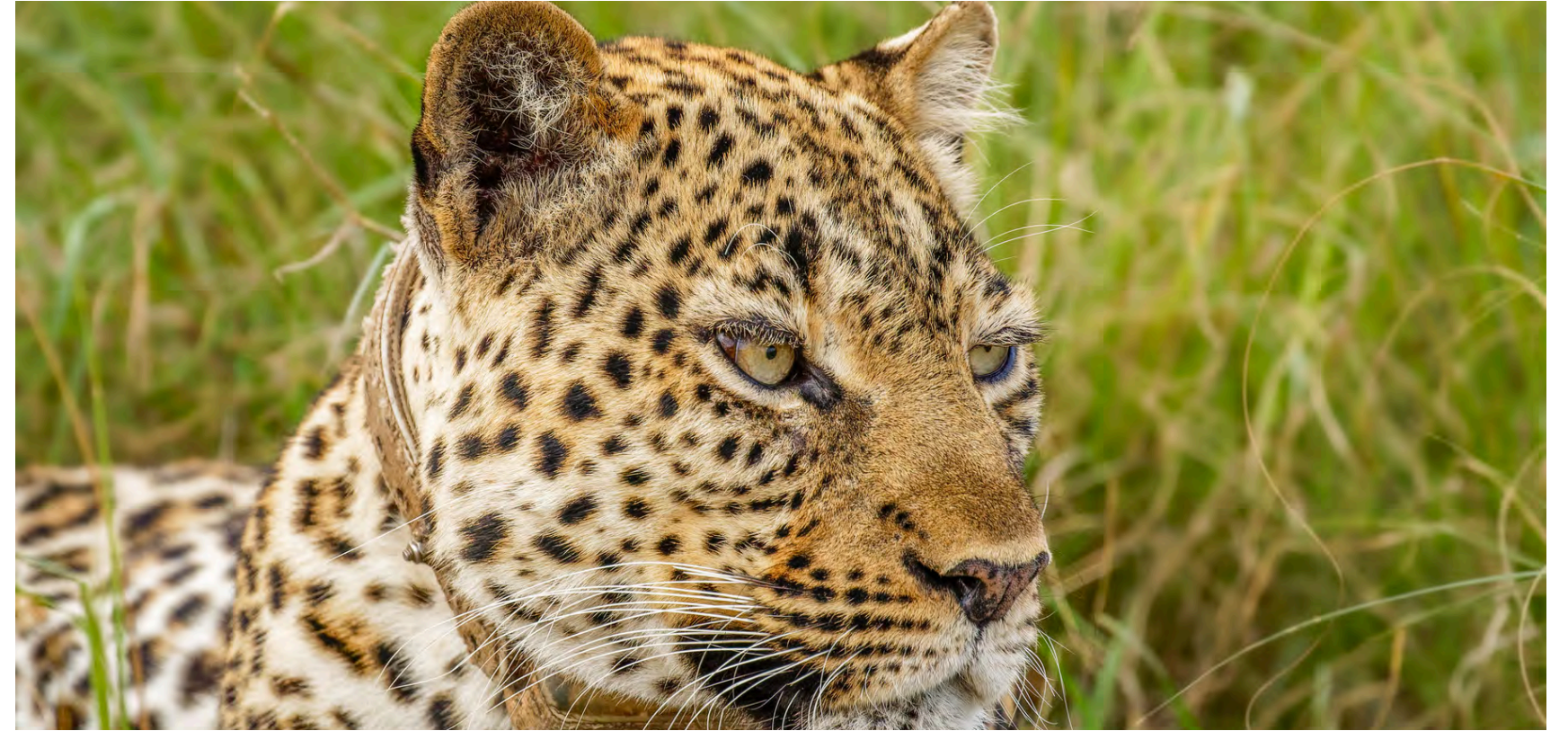


## Day 04. Game Drive & Boat Ride Along The Kazinga Channel

After an early morning breakfast, depart for your morning game drive in Kasenyi areas. Look out for wildlife animals such as Lions, Leopards, Buffalos, Elephants, Antelopes, Warthogs, Waterbucks, Bushbucks and so on. Lunch and in the afternoon set out for the launch cruise along the Kazinga channel. The channel connects Lake Edward and Lake George. The channel is a home to one of Africa's largest hippo populations and bird species. this 3hrs boat cruise will enrich you with views of the water loving animals such as Hippos, Elephants, Buffalos, Crocodiles and other antelopes as well as bird species. Return to your Lodge in the evening for dinner and overnight stay.

## Day 05. Ishasha Sector & Transfer To Bwindi Impenetrable Forest National Park

After breakfast leave the northern side of the park and transfer to the southern sector of Ishasha. Game drive in the mid-morning hours searching for the rare tree climbing lions. Afternoon embark on your journey to the famous Bwindi Impenetrable Forest National Park. The park is well known for being a habitat to the endangered species of Mountain Gorillas. Check in at your Lodge. (Approx. 5 hrs drive)



## Day 06. Gorilla Trekking In Bwindi

### Impenetrable Forest National Park

The day is finally here for your unforgettable life time experience of meeting face to face with the giant mountain Gorillas. You will start your day with an early breakfast at your lodge and then transfer to the Park headquarters (Depending on which location you have booked your accommodation) for briefing. There are 4 sectors in which Gorilla trekking takes place with in Bwindi Forest. The northern side of the park is comprised of Buhoma and Ruhija Sector and the southern side comprised of Rushaga and Nkuringo sectors. After Briefing, you will start on your day's trek. Searching for the gorillas may take like 2-5hrs depending on where they were last spotted the previous day. Once they have been spotted, you will be given one hour to take videos, photos and also get a chance to ask the rangers and the guides any questions about these giant apes. Besides the great Apes, the forest is also a home to other wildlife and bird species such as butterflies, primates, mammals, frogs and so on which all can be seen along the way to the Gorillas. After seeing the Gorillas, you will then head back to your lodge and retire for the rest of the day. The whole day activity can take between 5 to 9hrs. Packed Lunch and hiring porters are highly recommended. If time permits, you will also visit the Ride 4 A Woman project in Buhoma and get a chance to interact with local women and also learn about their variety of hand work crafts made



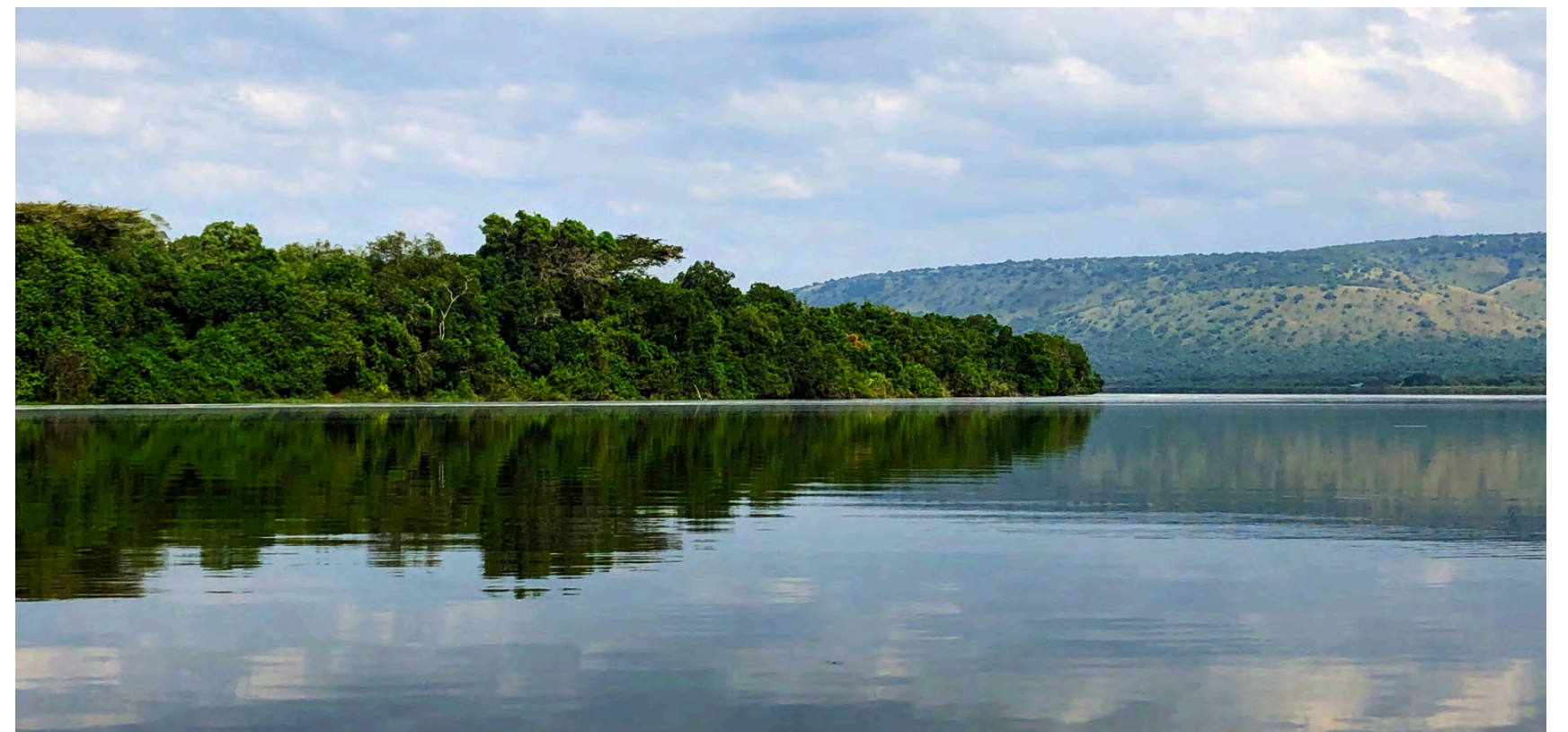
out of local materials like basket weaving and knitting. Dinner and overnight stay at your Lodge.

## **Day 07. Lake Mbuoro National Park**

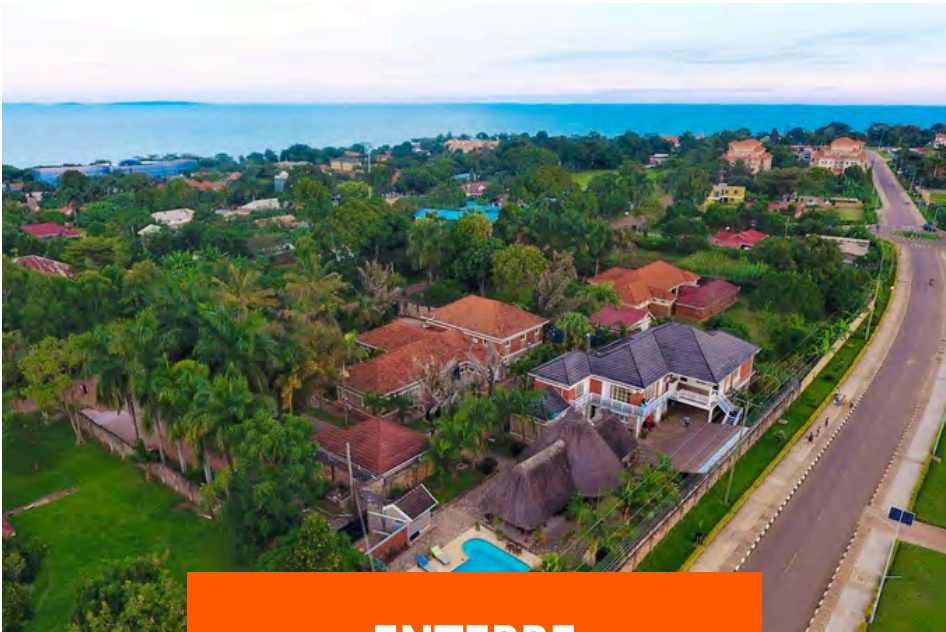
After your morning early breakfast, you will be driven to Lake Mbuoro National Park which is Uganda's smallest National Park. The journey will take you through stunning sceneries and views of the Ankole Kingdom with animal farms and different crop plantations. Arrive in time for Lunch at your Lodge in Lake Mbuoro. Afternoon set out for the boat cruise on Lake Mbuoro. Look out for Hippos, Buffalos and others. The park is famously known for harboring the largest number of Zebras in Uganda. Other animals that can be seen also include Impalas, Oribis, Giraffes and a lot of bird species. Overnight at your Lodge. (Approx. 5 hrs drive)

## **Day 08. Departure**

Morning breakfast and have a game drive as you exit the park. Look out for animals which are habitat in the park such as Impalas, Zebras, Oribi, Topi, Elands and so on. Lake Mbuoro also is one of the few parks where one can do a guided nature walk and still most of the animals as if you are on the game drive. The park also is a habitat to more than 300 bird species and also very famous for birders. Later drive back to Entebbe having Lunch en route. Stop over at the Equator for the water experience as well as Photography. Proceed and drop off at the Airport in time for your evening departure flight to your next destination or Back Home.



# EXPLORE TOP DESTINATIONS



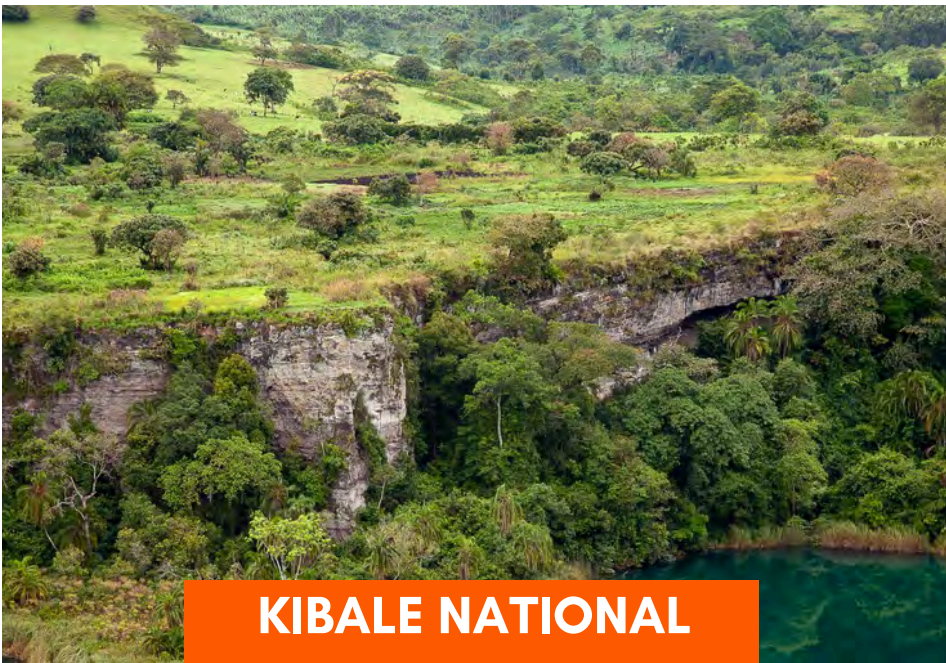
**ENTEBBE**



**FORT PORTAL**



**QUEEN ELIZABETH  
NATIONAL PARK**



**KIBALE NATIONAL  
PARK**



**BWINDI IMPENETRABLE  
FOREST NATIONAL PARK**



**LAKE MBURO  
NATIONAL PARK**



# BLACK PEARL

T O U R S

**BOOK NOW**



Fadel H.  
+96170999653  
Lana M.  
+96181655365  
Malake N.  
+9613077493  
Naziha C.  
+96181057313

Omar S.  
+96176706620  
Rana F.  
+96181755550  
Razan H.  
+96181755552  
Salma T.  
+96181006079

Samar N.  
+96176001409  
Shahnaz A.  
+96181755553

**Click the name to chat on WhatsApp**



[www.blackpearlholiday.com](http://www.blackpearlholiday.com)



[info@blackpearl-tours.com](mailto:info@blackpearl-tours.com)



Noujoum Center, Ras Maska  
Street, Haykaliye, Koura

**Click the address to view on Google Maps**